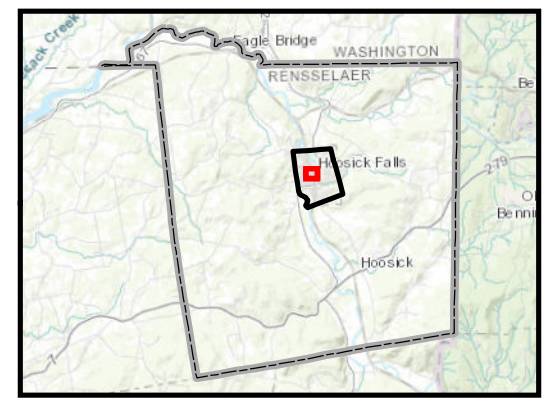
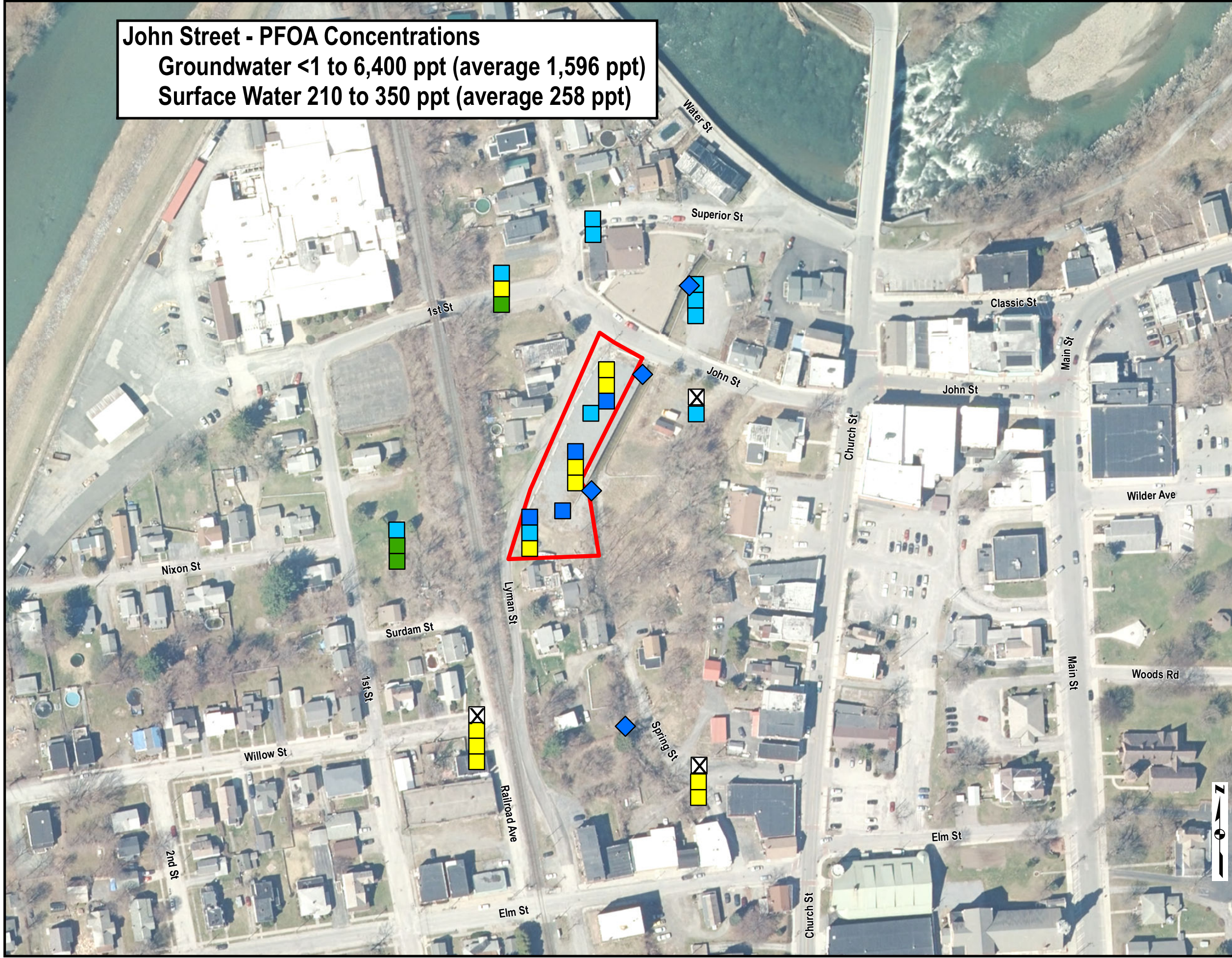


John Street - PFOA Concentrations
 Groundwater <1 to 6,400 ppt (average 1,596 ppt)
 Surface Water 210 to 350 ppt (average 258 ppt)

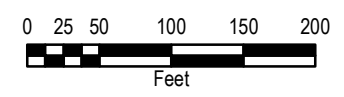


Legend

- Approximate Property Boundary
- Stacking of symbols indicate results from shallow, intermediate and deep well depths
- Samples collected between Oct 2016 and Jan 2017
- < 100 ppt
- 100 - < 500 ppt
- 500 - < 1,000 ppt
- 1,000 - < 10,000 ppt
- 10,000 - < 100,000 ppt
- ≥ 100,000 ppt
- Surface Water Sample
- Groundwater Sample
- No Groundwater Sample collected

No government standards or guidance values exist for PFOA in groundwater or surface water

NOTES:
 PFOA - Perfluorooctanoic Acid
 ppt - parts per trillion
 Aerial Imagery captured in 2014 from New York State



PFOA in Groundwater Samples from Monitoring Wells and Surface Water Samples
 John Street
 Village of Hoosick Falls
 New York

