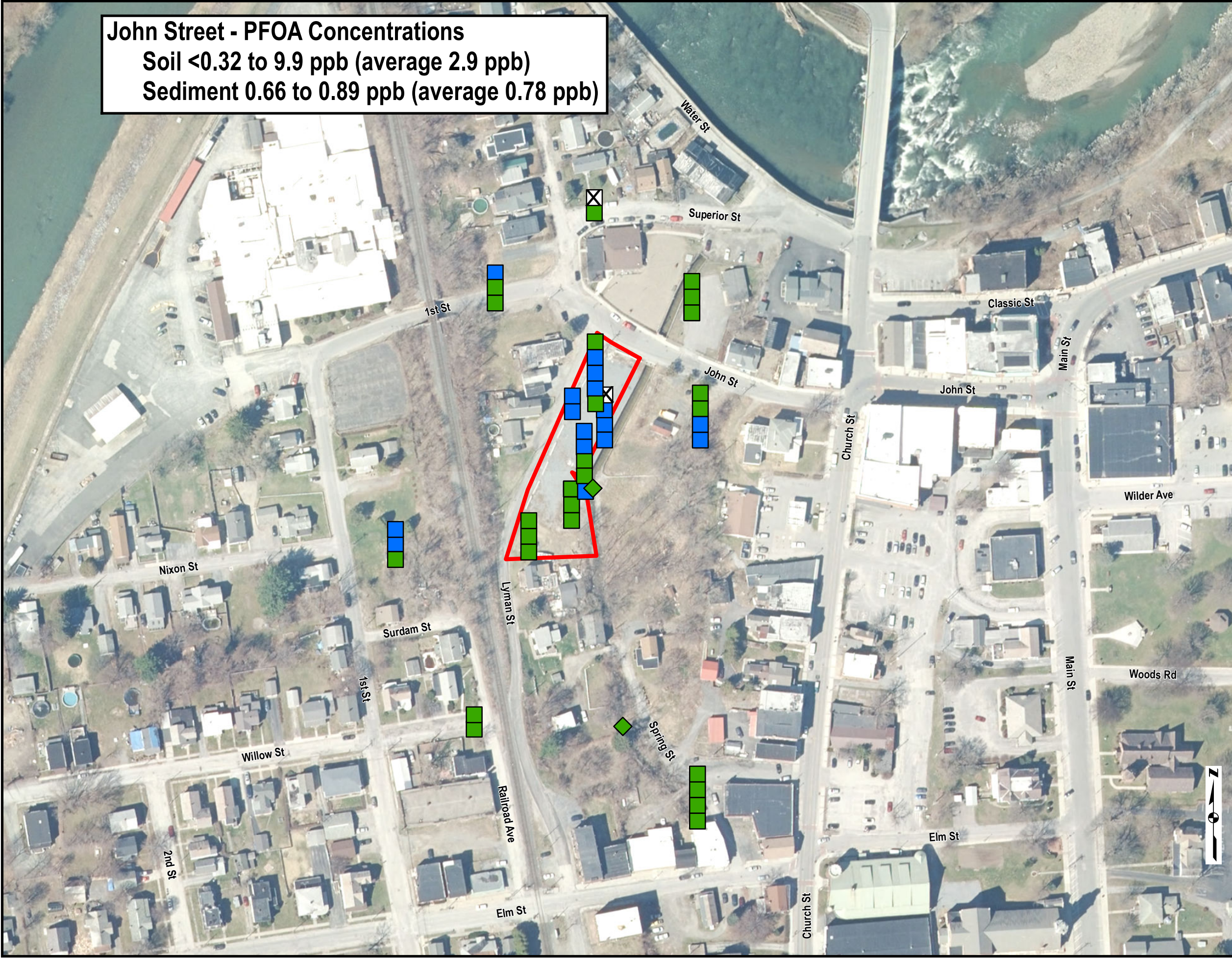


John Street - PFOA Concentrations
 Soil <0.32 to 9.9 ppb (average 2.9 ppb)
 Sediment 0.66 to 0.89 ppb (average 0.78 ppb)

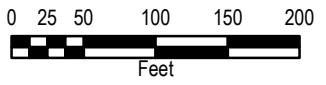


Legend

- Approximate Property Boundary
- Stacking of symbols indicate results from surface, near-surface, and deeper sample depths
- Samples collected between Jul and Dec 2016
- < 1 ppb
- 1 - < 10 ppb
- 10 - < 100 ppb
- 100 - < 1,000 ppb
- ≥ 1,000 ppb
- ◇ Sediment Sample
- Soil Sample
- X
 Soil not sampled at surface or near surface depths

USEPA Site-Specific soil screening value for PFOA is 1,000 ppb

NOTES:
 PFOA - Perfluorooctanoic Acid
 ppb - parts per billion
 Aerial Imagery captured in 2014 from New York State



PFOA Concentrations in Soil Samples and Sediment Samples
 John Street
 Village of Hoosick Falls
 New York

