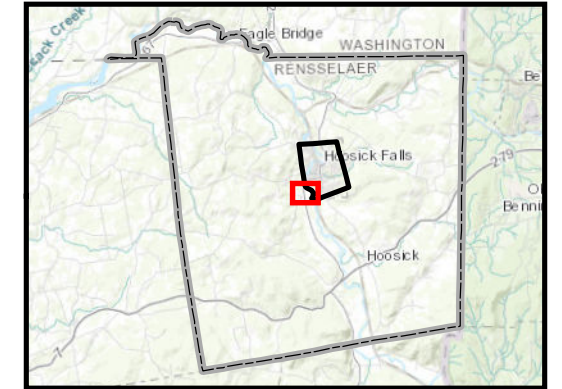
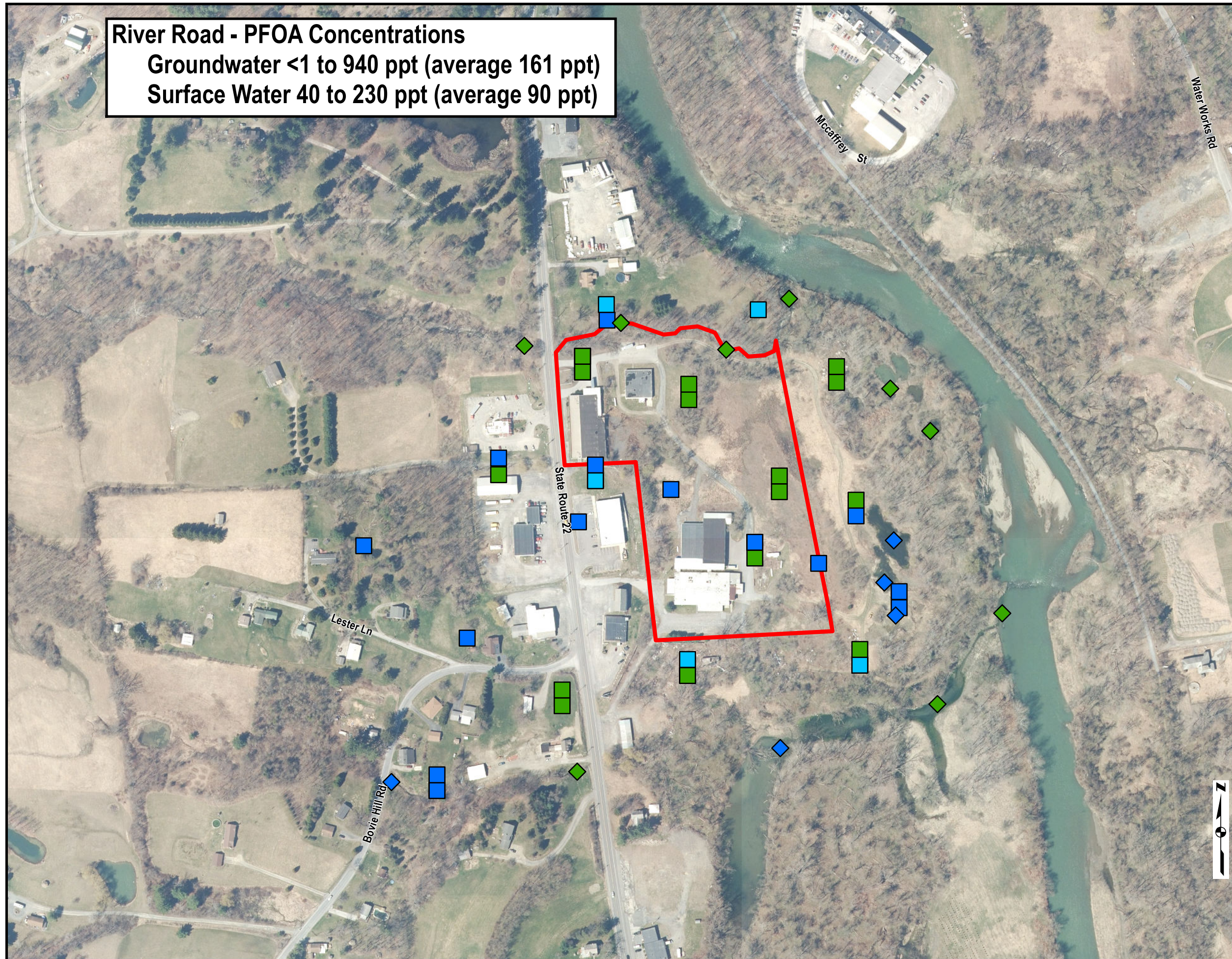


River Road - PFOA Concentrations
Groundwater <1 to 940 ppt (average 161 ppt)
Surface Water 40 to 230 ppt (average 90 ppt)



Legend

Approximate Property Boundary

Stacking of symbols indicate results from shallow, intermediate and deep well depths

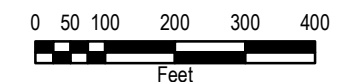
Samples collected between Oct 2016 and Jan 2017

- < 100 ppt
- 100 - < 500 ppt
- 500 - < 1,000 ppt
- 1,000 - < 10,000 ppt
- 10,000 - < 100,000 ppt
- ≥ 100,000 ppt
- Surface Water Sample
- Groundwater Sample

No government standards or guidance values exist for PFOA in groundwater or surface water

NOTES:

PFOA - Perfluorooctanoic Acid
ppt - parts per trillion
Aerial Imagery captured in 2014 from New York State



**PFOA in Groundwater Samples
from Monitoring Wells and Surface
Water Samples**

River Road
Town of Hoosick
New York

