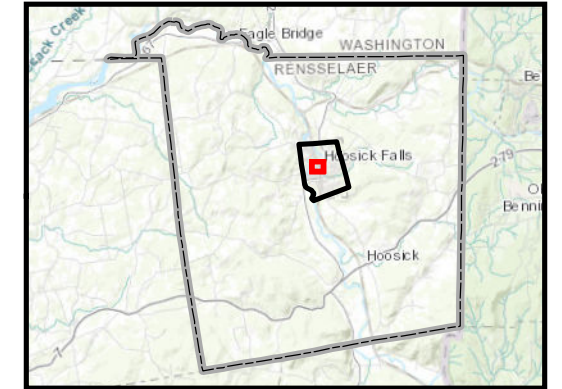
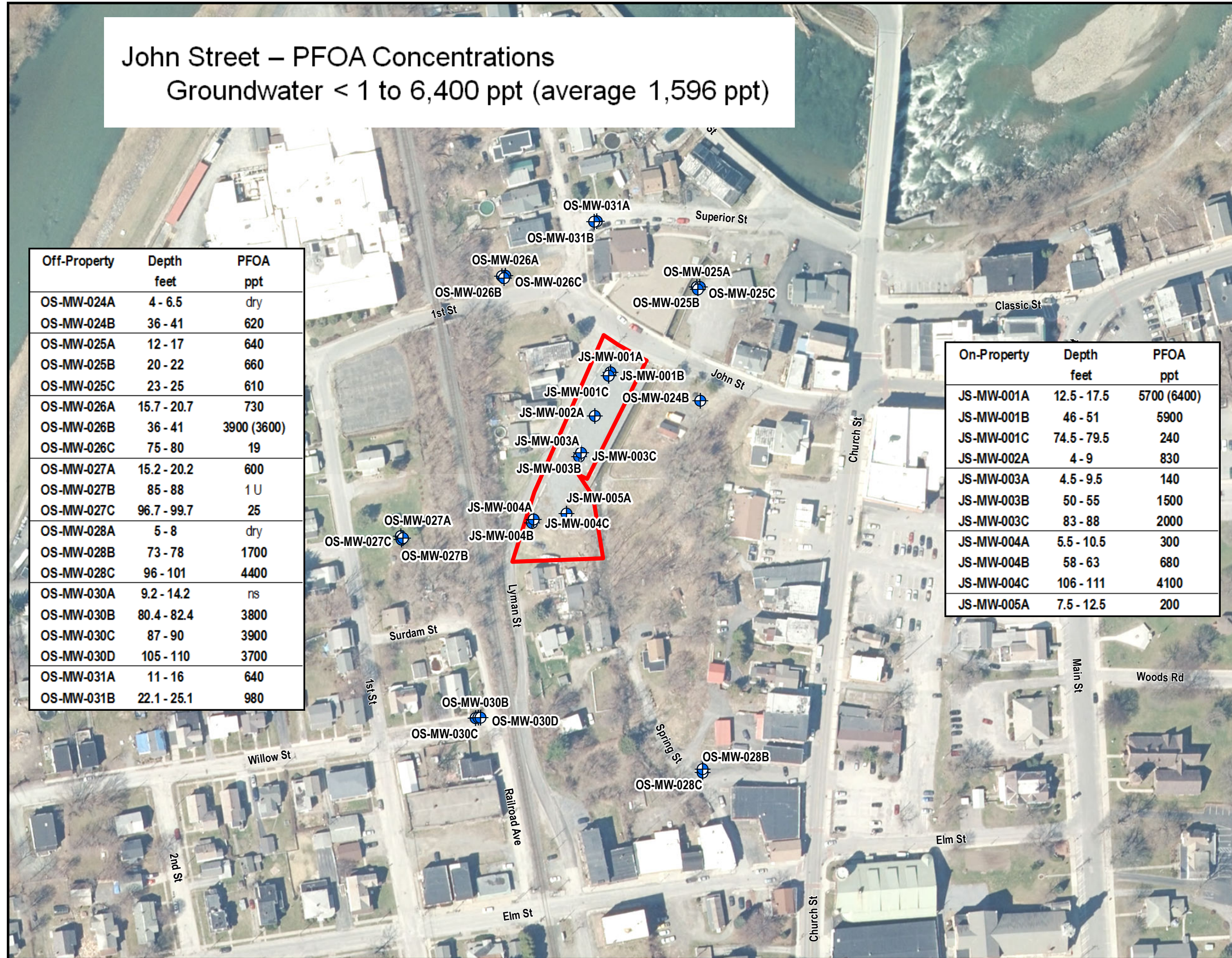


# John Street – PFOA Concentrations

Groundwater < 1 to 6,400 ppt (average 1,596 ppt)

Off-Property	Depth feet	PFOA ppt
OS-MW-024A	4 - 6.5	dry
OS-MW-024B	36 - 41	620
OS-MW-025A	12 - 17	640
OS-MW-025B	20 - 22	660
OS-MW-025C	23 - 25	610
OS-MW-026A	15.7 - 20.7	730
OS-MW-026B	36 - 41	3900 (3600)
OS-MW-026C	75 - 80	19
OS-MW-027A	15.2 - 20.2	600
OS-MW-027B	85 - 88	1 U
OS-MW-027C	96.7 - 99.7	25
OS-MW-028A	5 - 8	dry
OS-MW-028B	73 - 78	1700
OS-MW-028C	96 - 101	4400
OS-MW-030A	9.2 - 14.2	ns
OS-MW-030B	80.4 - 82.4	3800
OS-MW-030C	87 - 90	3900
OS-MW-030D	105 - 110	3700
OS-MW-031A	11 - 16	640
OS-MW-031B	22.1 - 25.1	980

On-Property	Depth feet	PFOA ppt
JS-MW-001A	12.5 - 17.5	5700 (6400)
JS-MW-001B	46 - 51	5900
JS-MW-001C	74.5 - 79.5	240
JS-MW-002A	4 - 9	830
JS-MW-003A	4.5 - 9.5	140
JS-MW-003B	50 - 55	1500
JS-MW-003C	83 - 88	2000
JS-MW-004A	5.5 - 10.5	300
JS-MW-004B	58 - 63	680
JS-MW-004C	106 - 111	4100
JS-MW-005A	7.5 - 12.5	200



### Legend

- Monitoring Well Location
- Approximate Property Boundary

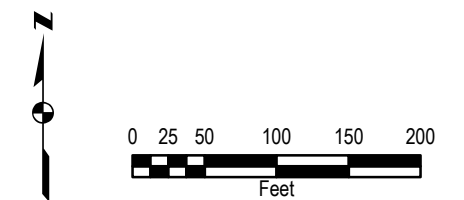
### NOTES:

PFOA - Perfluorooctanoic Acid  
 ppt - parts per trillion  
 U - Compound not detected over detection limit  
 J - Approximate value  
 na - Sample not analyzed for parameter  
 ns - Not sampled due to insufficient water

No government standards or guidance exist for PFOA in groundwater or surface water

Values in parentheses are the results from field duplicates

Aerial Imagery captured in 2014 from New York State



PFOA Concentrations in Groundwater Samples From Monitoring Wells  
 John Street  
 Village of Hoosick Falls  
 New York

